



BRIDAL LOOKBOOK





ABOUT US

Welcome to EverWild Florals, and congratulations on your Engagement! We are thrilled to learn more about you and the vision for your wedding day.

Founded in 2018, EverWild's mission has been to spread more beauty, love, and joy through flowers. From Birthdays, Anniversaries, Just Because, and of course - Weddings - we take such great joy and fulfillment from utilizing florals to celebrate the biggest moments in people's lives.

Here at EverWild our values are focused around sustainability, a positive team environment, and fair pricing. We use only the freshest seasonal flowers, frequently sourced from local Kansas and Missouri farms during the spring & summer growing season. Our sustainable practices cut out excessive waste, allowing us to price our arrangements more affordably. We believe that every couple's unique vision and style should be honored, so as a result we don't have specific packages, we don't require minimums, and gladly work with couples of all budgets. We offer a wide range of arrangement types, including bouquets, garlands, centerpieces, and large-scale floral installations. We work with you to provide setup, cleanup, and delivery services, as well as venue visits, samples, and consultations. Whatever your vision for your wedding flowers, our team is delighted to bring your vision to life on your special day.

We are grateful for the opportunity to meet with you, and look forward to creating a beautiful wedding together!

To forever staying a little wild,

Sarah Jaeger, Owner



TABLE OF CONTENTS

Section 1: Wedding Floral Styles p5

- Modern Elegance p6
- Bohemian Glam p8
- Bold & Bright p10
- Lush Garden p12

Section 3: Bridal Bouquet Shapes p21

- Compact Round p22
- Loose Round p23
- Asymmetrical p24
- Cascade p25
- Bridesmaids p26
- Bouttonieres p28
- Corsages p30
- Wearables p31

Section 2: Our Favorite Flowers to Design With p15

- Greenery p16
- Line Flowers p16
- Mass Flowers p17
- Textural Flowers p17
- Filler Flowers p18
- Unique/Dramatic Flowers p19

Section 4: Focal Structures p33

- Pedestals p34
- Arches p35
- Broken Arch p36
- Hanging Installations p37
- Greenery Wall p38
- Staircase p39
- Getaway Car p40
- Aisle Décor p41
- Signage p42
- Cocktail Hour p43
- Table Centerpieces p44-45
- Sweetheart and Head Table p46
- Cake Flowers p47
- Flatlays p48





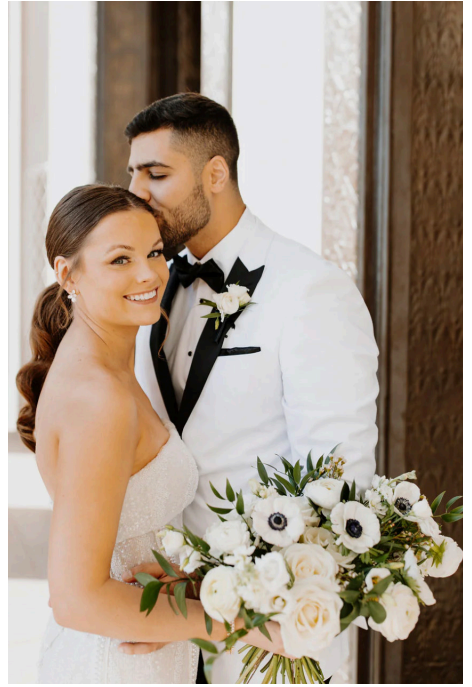
SECTION ONE STYLES

- Modern Elegance p6-7
- Bohemian Glam p8-9
- Bold & Bright p10-11
- Lush Garden p12-13

MODERN ELEGANCE



A floral style that seamlessly merges contemporary sophistication with timeless charm. With a focus on minimalist design and carefully curated florals, each arrangement exudes a sense of understated luxury. From sleek monochromatic bouquets to artistic compositions featuring unexpected floral pairings, “Modern Elegance” captures the essence of refined beauty, perfect for those seeking a sophisticated touch for any occasion.



BOHEMIAN GLAM



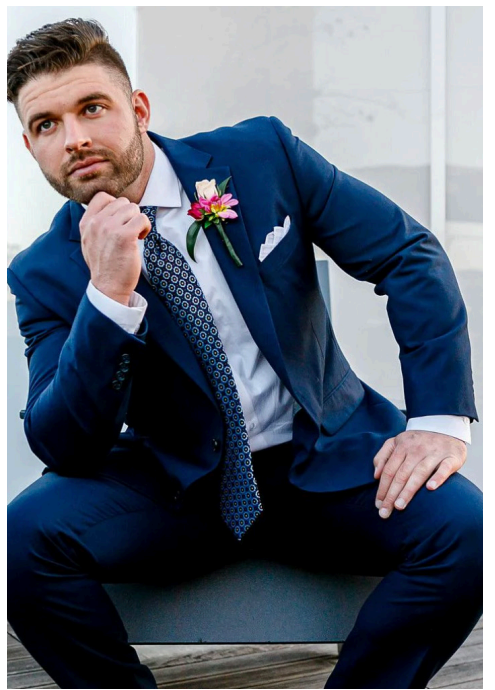
Welcome to the world of Bohemian Glam, where the spirit of freedom intertwines with lavish splendor. Bohemian Glam celebrates individuality with its spontaneous and organic arrangements, each telling a unique tale of wanderlust and creativity. Whether it's a lavish centerpiece or a whimsical bouquet, these creations exude a sense of untamed charm and elegance. Prepare to be swept away by the allure of Bohemian Glam as you infuse your space with its captivating energy and eclectic beauty.



BOLD & BRIGHT



Step into a world of vibrant energy and striking beauty with our “Bold and Bright” floral style. Each bouquet bursts with personality and flair, creating a captivating sensory experience. These arrangements are all about making a statement, whether it’s through oversized blooms, unexpected pairings, or daring design elements. Embrace the power of color and let your imagination run wild as you explore the possibilities of this bold and exuberant floral style.



LUSH GARDEN

A bride with long blonde hair, wearing a white off-the-shoulder wedding dress, is holding a large, lush bouquet of flowers. The bouquet is composed of various types of flowers, including roses, peonies, and smaller blossoms in shades of pink, peach, and white, interspersed with greenery. The background is slightly blurred, showing what appears to be a staircase.

Welcome to the enchanting world of “Lush Garden,” where natural beauty reigns supreme. This style invited you to immerse yourself in the abundance of verdant foliage, delicate petals, and fragrant blooms. Inspired by the charm of a flourishing garden, each arrangement exudes an effortless elegance and timeless allure. Whether it’s a romantic bouquet brimming with roses and peonies or a verdant centerpiece adorned with trailing vines and lush greenery, “Lush Garden” captures the essence of botanical splendor.







OUR FAVORITE FLOWERS

SECTION TWO
TO DESIGN WITH

Greenery p16
Line Flowers p16
Mass Flowers p17
Textural Flowers p17
Filler Flowers p18
Unique/Dramatic Flowers p19

GREENERY



Italian Ruscus



Ferns



Eucalyptus Greens



Jasmine Vine



Smilax

LINE FLOWERS



Stock



Delphinium



Snapdragons



Larkspur

MASS FLOWERS



Dahlia



Roses



Hydrangea



Peony



Cremons

TEXTURAL FLOWERS



Astilbe



Astrantia



Gypsophila

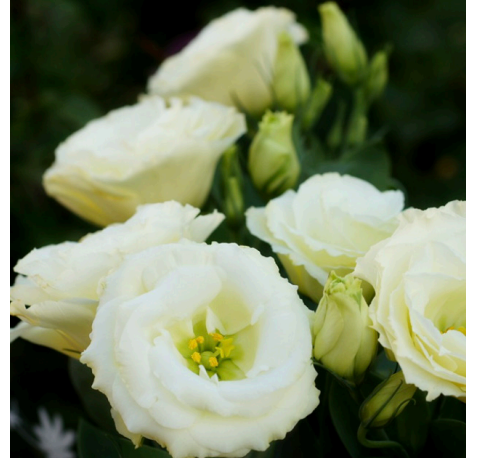
FILLER FLOWERS



Ranunculus



Spray Roses



Lisianthus



Scabiosa



Tulips



Carnations



Anemone



Sweet Pea



Zinnia

UNIQUE/DRAMATIC FLOWERS



Orchid



Branches/Curly Willow



Pampas Grass



Bleached Italian Ruscus



Privett Berry




Protea Blushing Bride



Hanging Amaranthus





SECTION THREE
BRIDAL
BOUQUET
SHAPES

Compact Round p22

Loose Round p23

Asymmetrical p24

Cascade p25

Bridesmaids p26-27

Boutonnieres p28-29

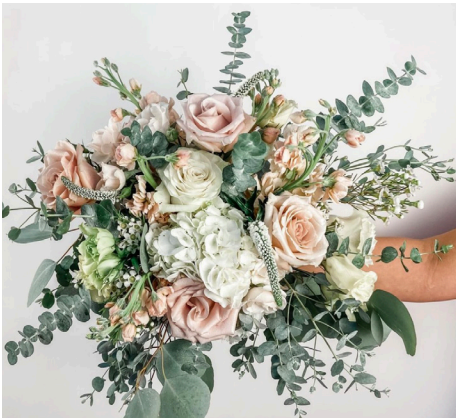
Corsages p30

Wearables p31



COMPACT ROUND

ranges from \$150-\$350



LOOSE ROUND

ranges from \$150-\$350



ASYMMETRICAL
ranges from \$150-\$350



CASCADE

ranges from \$225-\$450

BRIDESMAIDS

PETITE VERSION OF THE BRIDE
ranges from \$75-\$150



SINGLE VARIETY
ranges from \$10+



HOOP BOUQUET
ranges from \$60-100



BASKETS
ranges from \$50-\$125



BRIDESMAIDS

BOUTONNIERES

TRADITIONAL BOUTONNIERE
ranges from \$20-\$25



POCKET BOUTONNIERE
\$45

BOUTONNIERES



CORSAGES

\$35

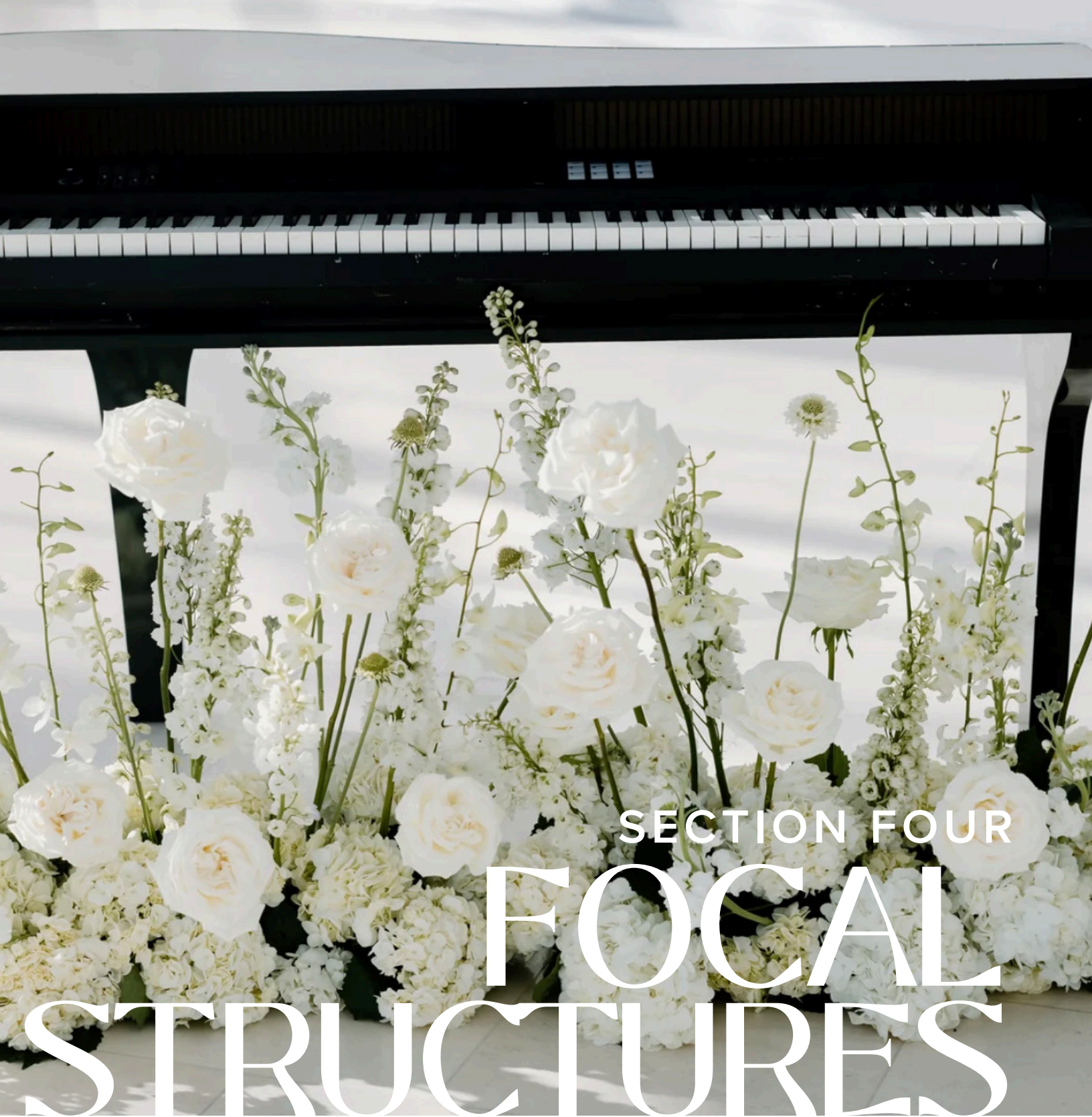


ranges from \$35-\$75

WEARABLES







SECTION FOUR

FOCAL
STRUCTURES

Pedestals p34

Arches p35

Broken Arch p36

Hanging Installations p37

Greenery Displays p38

Staircase p39

Getaway Car p40

Aisle Décor p41

Signage p42

Cocktail Hour p43

Table Centerpieces p44-45

Sweetheart and Head Table p46

Cake Flowers p47

Flatlays p48

PEDESTALS

FLORAL BURSTS
ranges from \$175-\$350 each + pedestal rental



ARCHES

SWAGS ranges from \$250-\$500



PARTIAL COVERAGE ranges from \$500-\$1000



FULL COVERAGE ranges from \$1000 - \$3000



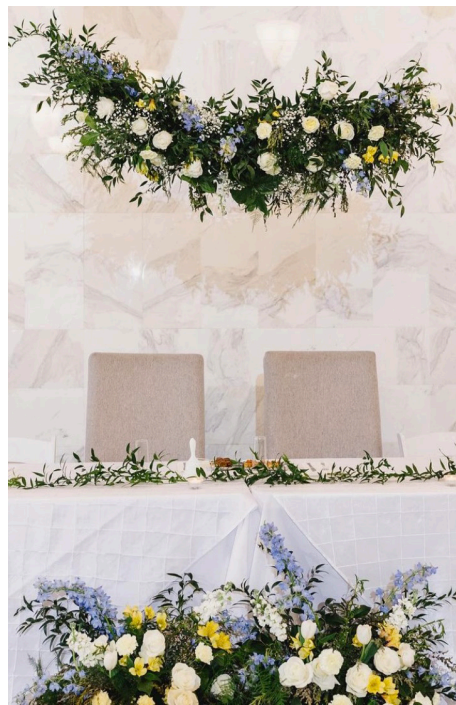
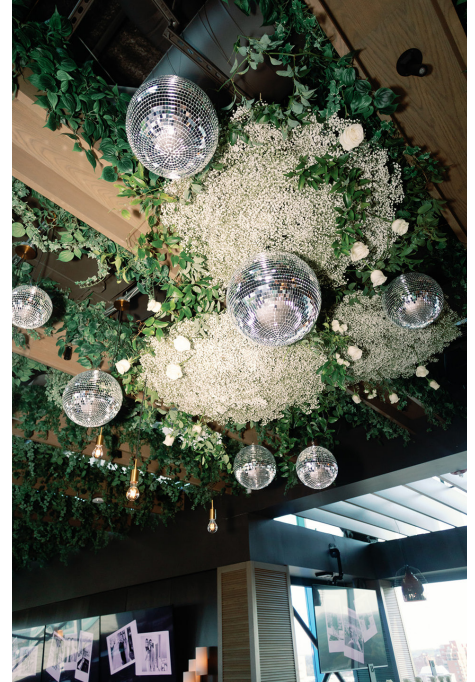
BROKEN ARCH

ranges from \$1,800-\$3,000



HANGING INSTALLATIONS

ranges from \$500-\$1,500+



GREENERY DISPLAYS



\$500-\$4,000, dependent upon coverage

STAIRCASE



GETAWAY CAR

ranges from \$1,000-\$2,000



AISLE DÉCOR



SCATTERED PETALS/GREENERY LINED priced by the foot
FLOOR BURSTS ranges from \$75-\$350 each
CHAIR SWAGS ranges from \$10-\$25 each

SIGNAGE

ranges from \$50 and up



COCKTAIL HOUR



TABLE CENTERPIECES

GREENERY & CANDLES (JUST GREENERY + CANDLE TRIO + VOTIVES) \$15 to \$35 each



PETITE & BUD VASES (ROUND TABLES + LONG FAMILY STYLE TABLE) \$7 to \$12 each



TABLE CENTERPIECES

MEDIUM (LOW ROUND, COMPOTE, CLUSTER OF) \$75 to \$150



TALL (HARLOW, GLASS TRUMPET, TALL SLEEK CYLINDER) \$200 to \$450



SWEETHEART AND HEAD TABLE



CAKE FLORAL ranges from \$25-\$75



CAKE MEADOW ranges from \$200-\$500

CAKE FLOWERS



FLATLAYS

ranges from \$25-\$40





Table
THREE

